

# SOLID Wall

Based on SOLID Pro

Plain and  
simple  
installation

Fast system  
assemble  
time

Invisible  
mounting  
materials

Sustainable  
and  
effective

Fits all wall  
types



**SOLITEK**

Mokslininku str. 6A,  
Vilnius 08412, Lithuania  
Tel. +370 5 263 8774  
info@solitek.eu  
www.solitek.eu

72 cells ⚡ 380W ⚡ 320W 60 cells

**30**

Product  
warranty

**87%**

Power  
Guarantee

**30**

Efficiency  
garantee

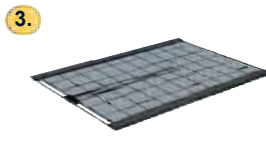
# Construction drawing



1. Fixing bracket is fixed to the wall.



2. Standard T or L profile as guiding rail with preassembled hooks is fixed to the bracket

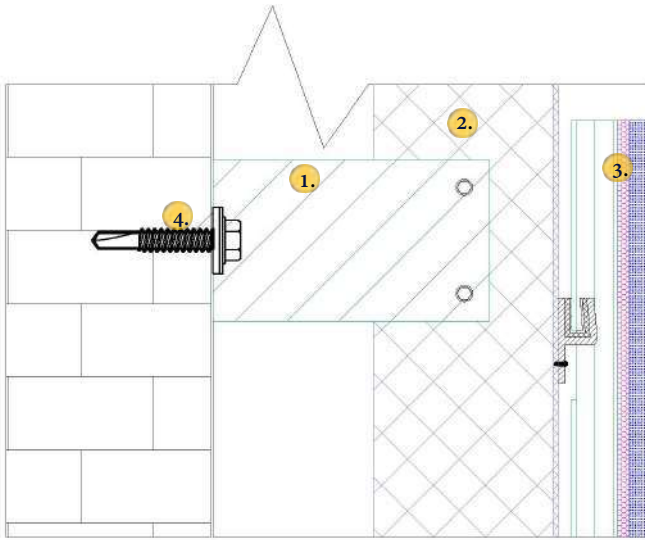


3. Frameless Glass/Glass PV module with a special glued profiles on the back face is attached on the hook.

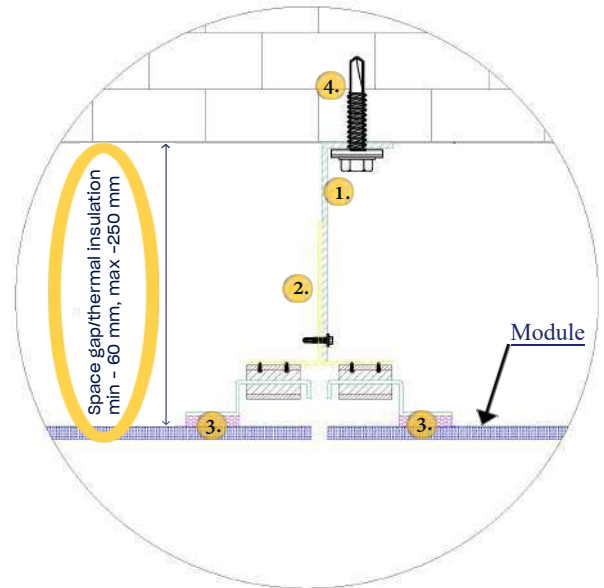


4. Anchors, screws and rivets for materials fixing.

## Vertical section



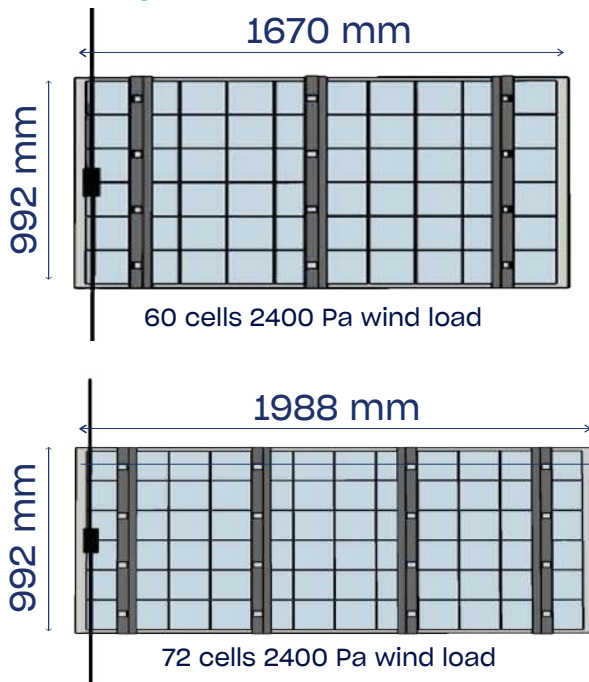
## Horizontal section



### Mounting construction

- Step No. 1. Positioning of brackets
- Step No. 2. Fixing of brackets
- Step No. 3. Fixing T/L profiles
- Step No. 4. Installing PV panels

### Landscape



### Portrait

