



## SOLID WALL

### System description

#### [Contents](#)

System Components, the installation process, and company contacts.  
Last updated May 6th, 2018

Jonas Vaišnys  
[jonas.vaisnys@solitek.eu](mailto:jonas.vaisnys@solitek.eu)

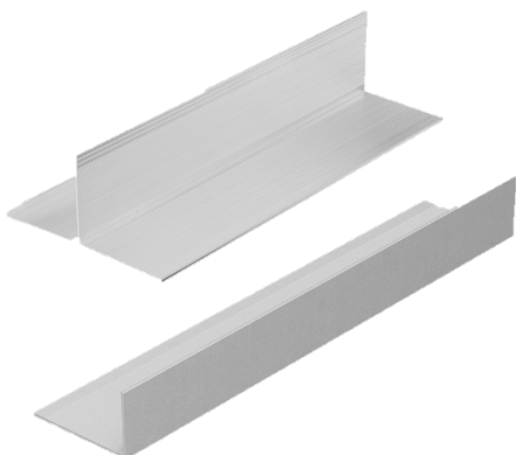
# 1 System components

Solid WALL facade system contains components:

## 1.1 Solid WALL facade PV panel

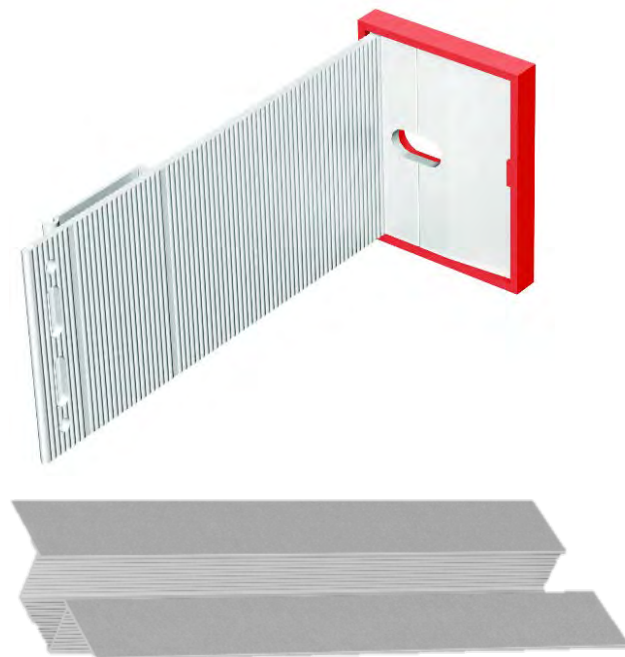


## 1.2 Guiding rails - T and L profiles

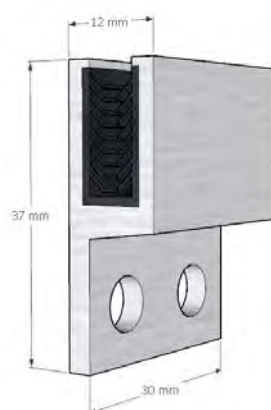


## 1.3 Omega profiles or brackets with spacers

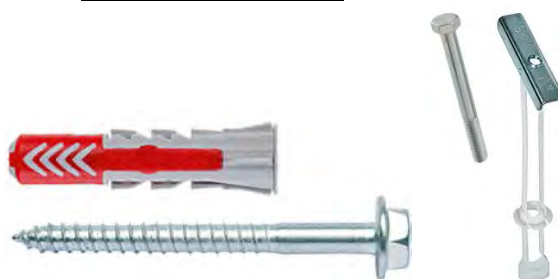
*(between wall outer surface and bracket)  
(depending on wall type, thermal insulation, wall plainness and required thermal properties)*



## 1.4 Special hooks



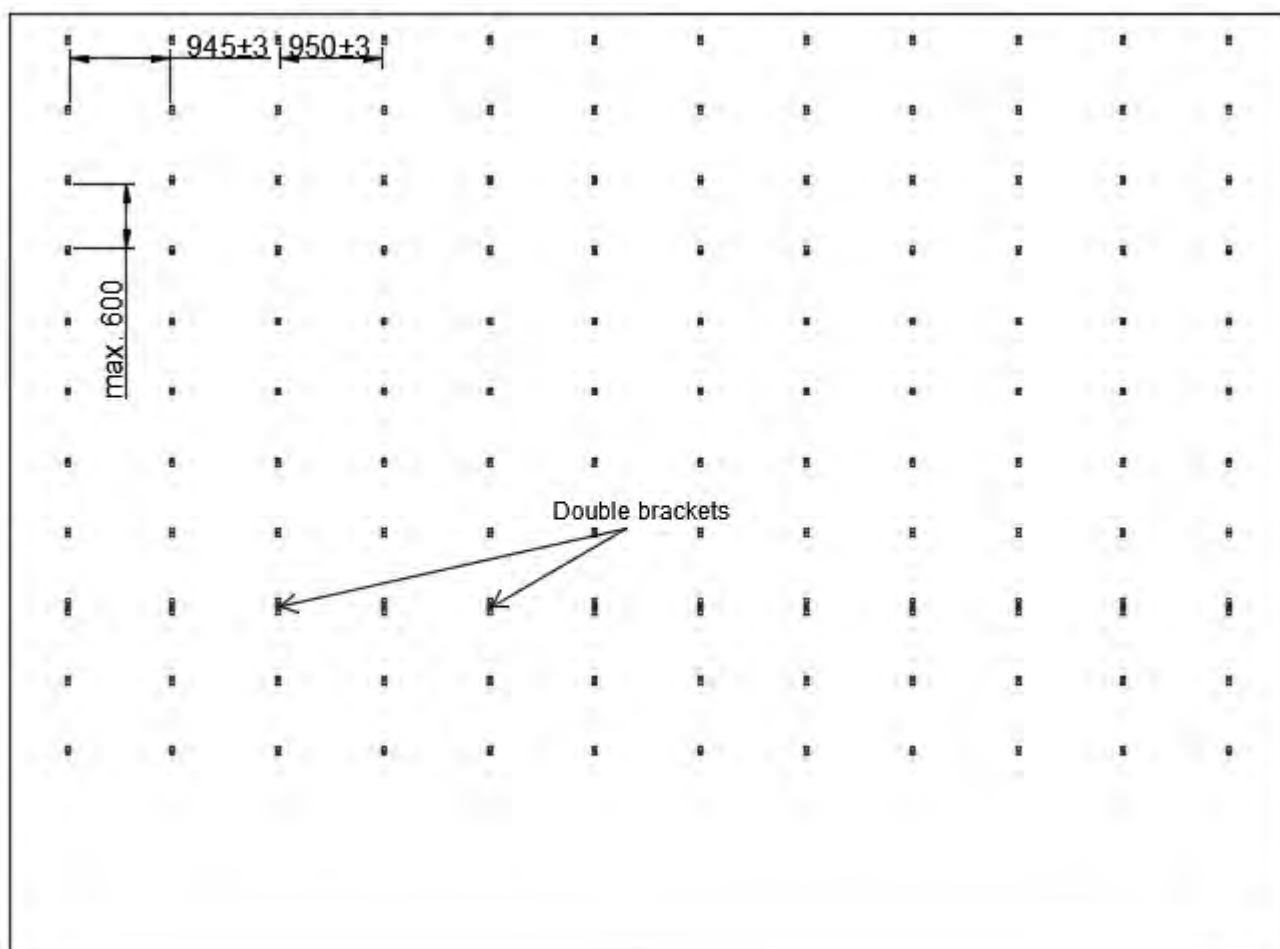
## 1.5 Screws and anchors



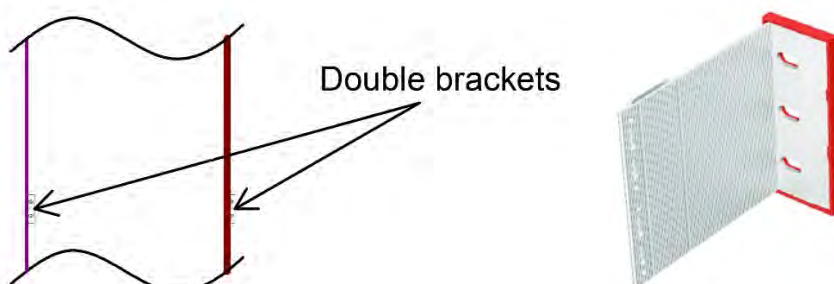
## 2 Installation

### 2.1 Step No. 1. Positioning of Brackets

Horizontal distance between side bracket and middle bracket (brackets are identical, T and L profiles adjust their position differently) the brackets has to be  $945 \pm 3$  mm and distance between middle brackets has to be  $950 \pm 3$  mm. Vertical distance between brackets cannot be greater than 600 mm.



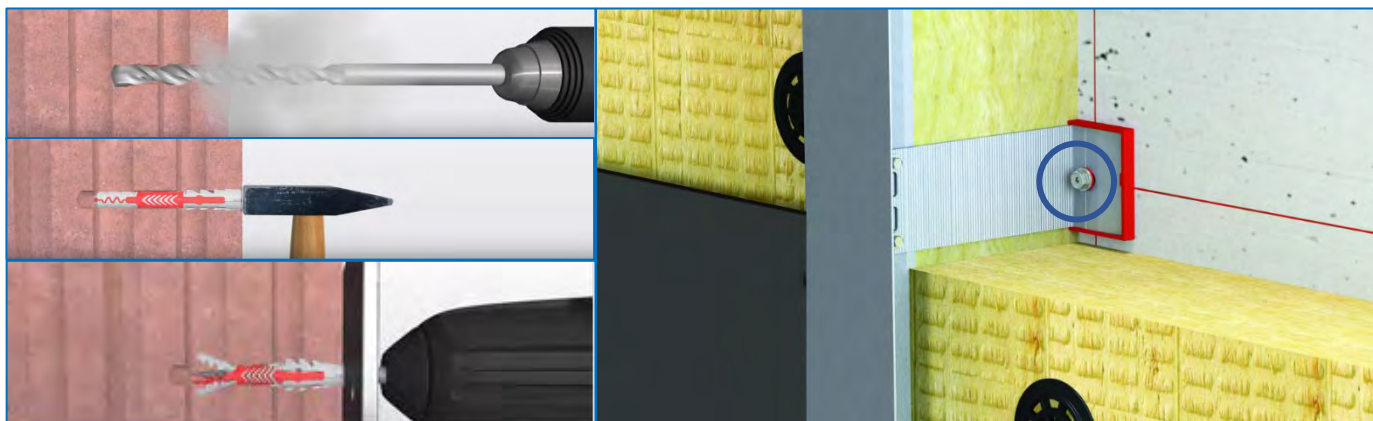
T and L profiles continuous length cannot exceed 6 m. In case when façade height is greater than 6 m profiles must be split for thermal expansion reserve and installed on double bracket with gap of 5 mm in between.



Distance between brackets is distance between their closest point when brackets are both orientated identically.

## 2.2 Step No. 2. Fixing of brackets

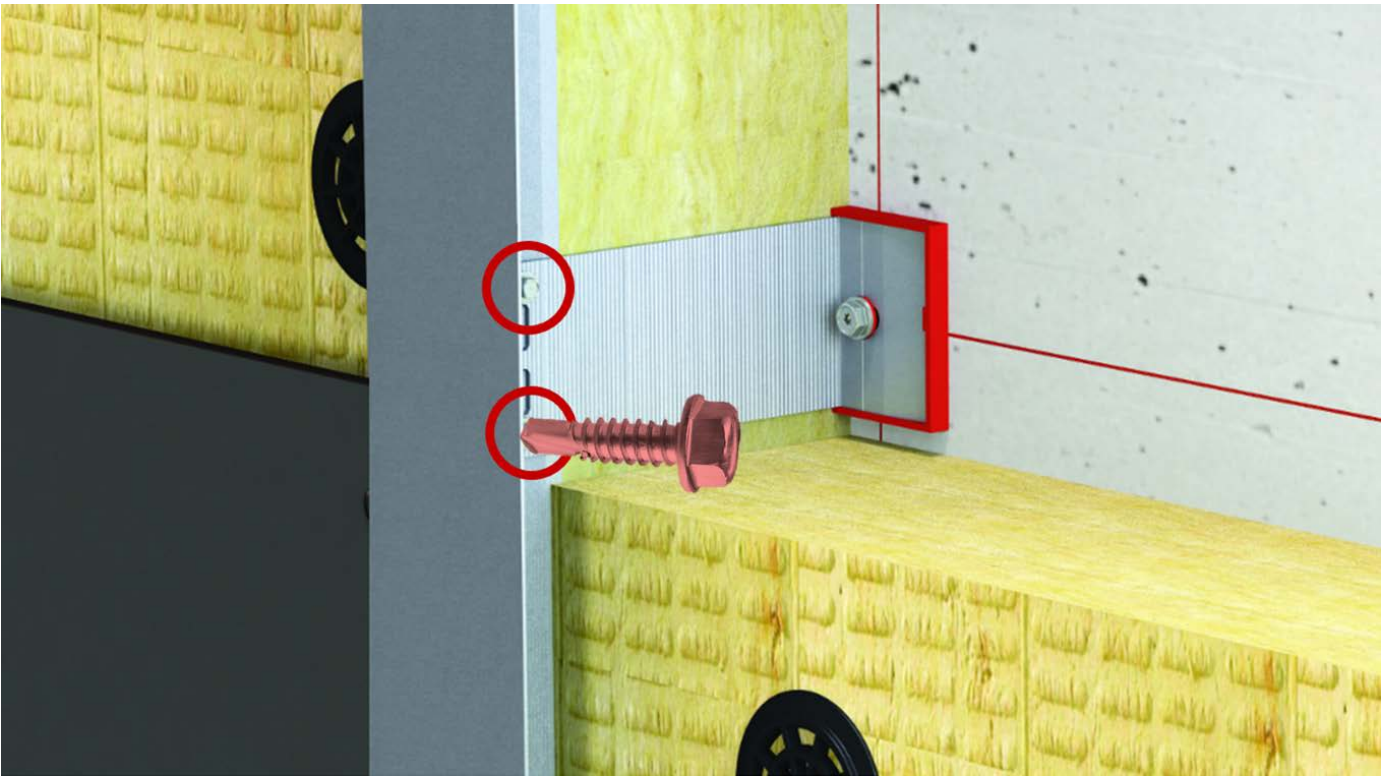
According to wall structure best bolt-anchoring solution is recommended.



Type and length of anchors is selected according to structure of the wall and required mechanical parameters.

## 2.3 Step No. 3. Fixing T and L profiles

T and L profiles are fixed to the brackets with self-drilling hex bolts with washers. Washers and screws must be made from stainless steel to prevent galvanic corrosion damage and accelerated wearing of the system.



#### 2.4 Step No. 4. Fixing of hooks to T/L profiles

For one PV panel 8 hooks have to be installed, 4 in each vertical profile.

Distance between hooks is provided bellow.



## 2.5 **Step No. 5.** Installing PV panels

After façade mounting system is installed PV panels can be installed. Installation is carried out with hanging principle. By starting from bottom panels are hanged on hooks. Installation can be proceeded either from left or right. Connection of PV panels have to be made before PV panels installation. SOLI Wall facade works as ventilated façade so PV panels temperature increases with height. To reduce mismatch losses caused by different PV panels temperatures it is recommended to connect them in rows instead of connection in columns.

## 3 Contact Us

### 3.1 **Company Info**

Soli Tek cells JSC

Mokslininkų g. 6A, L.I.G.H.T WING, LT-08412 Vilnius, LITHUANIA.

[info@solitek.eu](mailto:info@solitek.eu)

+370 5 2638774

Company code 302427915

VAT code LT100005059414

[www.solitek.eu](http://www.solitek.eu)